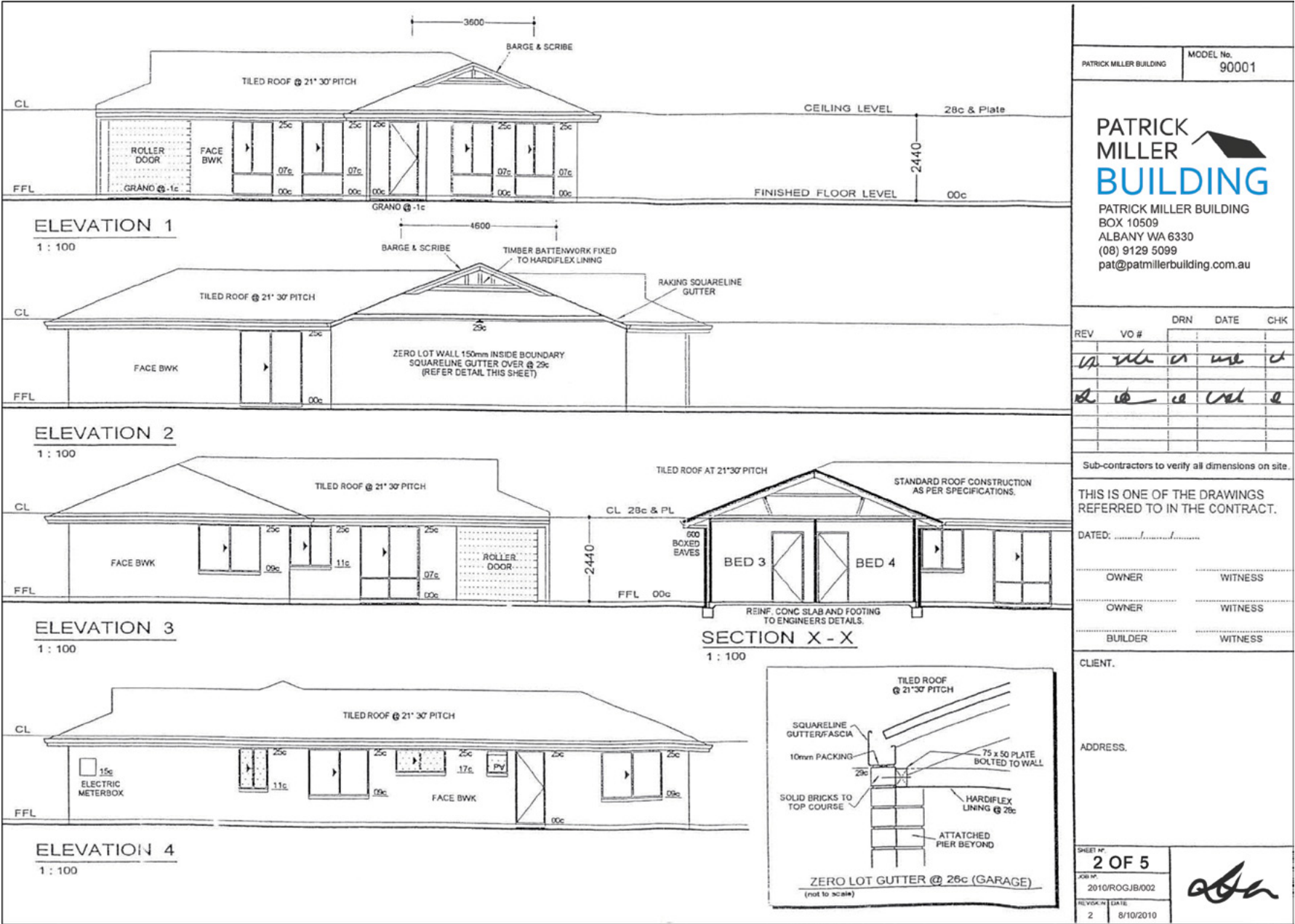


Design development stage - elevations plan, including external detail and section through



Reproduced with the permission of the Housing Industry Association Ltd

This is an elevations drawing from the design development stage showing all four elevations of the proposed residence. External details are shown including windows, doors and roof. Floor and ceiling heights are included. It also shows a section through, depicting the internal wall and doors for bedroom three and four. There is a detail drawing showing the guttering. The completed title block is on the right hand side of the sheet.

## 1. Doors

The completed doors within the external wall including the height from the finished floor level in brick coursing and overall height of the door in brick coursing to the eave. Also shows the style of the door and the direction in which the door slides or swings.

## 2. Windows

The completed windows within the external wall including the height from the finished floor level in brick coursing and the overall height of the window in brick coursing to the eave. Also shows the style of the window and the direction in which the window slides.

## 3. Roof lines

The completed roof lines including the height and the intersecting roof lines.

## 4. Roof features

The feature/s located within the roof line with given dimensions to indicate its size.

## 5. Roof features construction

Details the method and materials to be used to finish the roof feature.

## 6. Roof construction

Details the type of roof covering and the pitch or angle of the roof in degrees.

## 7. Internal wall height

The internal wall height dimension is shown from finished floor level to finished ceiling level.

## 8. External wall finish

Details face brickwork as being the finish to the external walls.

## 9. Meter box

The location of the meter box on the external wall and the height above the finished floor level.

## 10. Privacy windows

These windows are dotted to show that the glass in these windows is to be obscure for privacy.

## 11. Garage door

The location of the roller door within the external wall and its finished floor level below the main residence's finished floor level.

## 12. Setback details

Details of the setback of the external wall from the side boundary and the finishing of the guttering. Makes reference to a detail shown on the same sheet which shows a height of the finished brickwork above the height of the residence's finished floor level and the materials to be used.

## 13. Section through notation

Notation indicates this section through view has been taken from between these points on the floor plan.

## 14. Eaves

The eave type and width is detailed.

## 15. Roof frame section

The section of the roof frame indicates the type of roof construction method to be used, in this case traditional framed construction.

## 16. Structural detail

Refers to the structural engineers detail for the footing and slab.

## 17. Internal section

This part of the section shows that the section has been taken looking back into the house, therefore picking up the walls and doors of bedroom three and four.

## 18. Internal wall

The internal wall separating bedroom three and four shown in the section through.

## 19. Title block

The title block must be shown to record many of the project details including the owner's details, builder's details, address of the lot, revisions or amendments, scale, sheet number and job number.