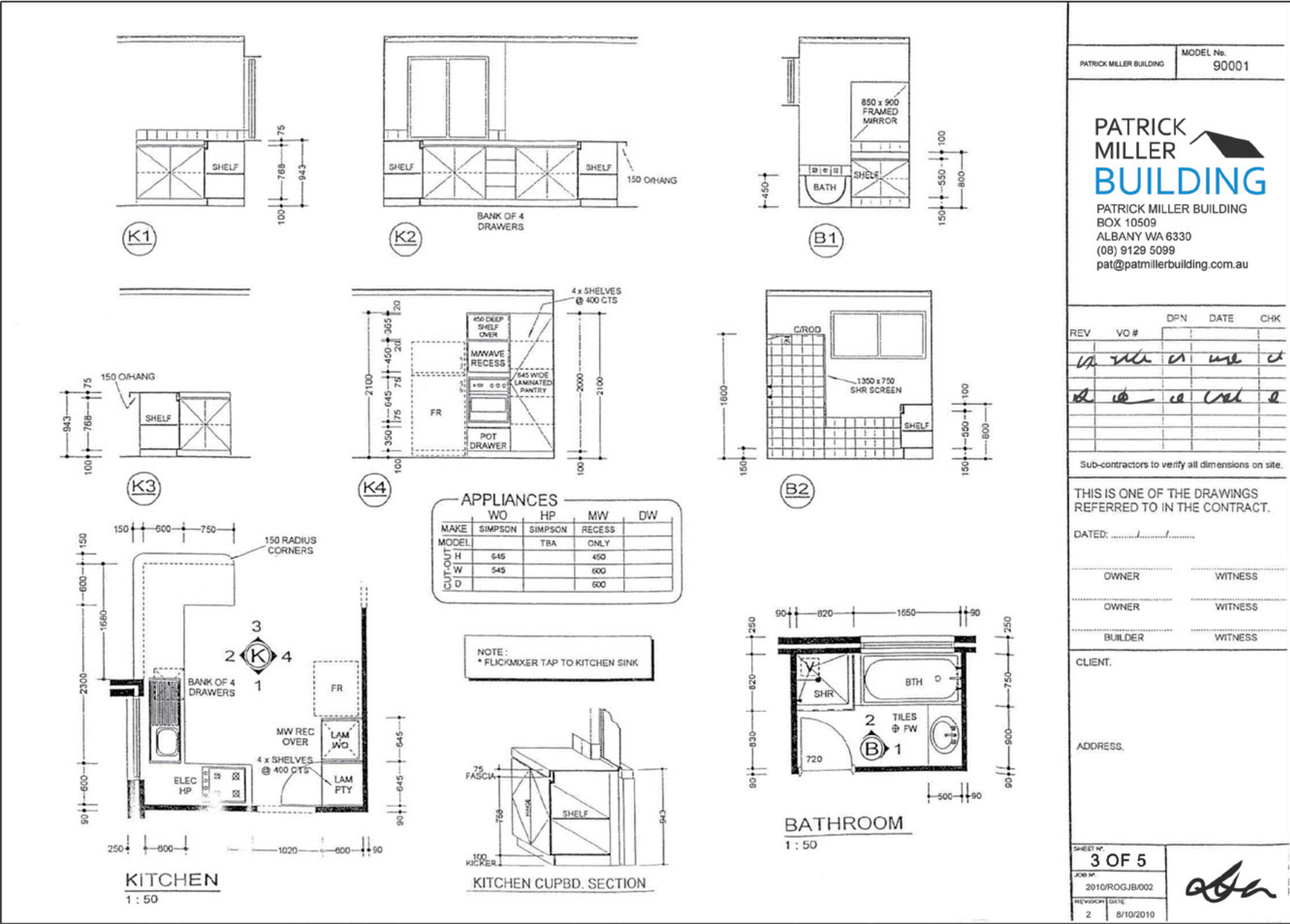


# Design development stage - internal detail and section through



Reproduced with the permission of the Housing Industry Association Ltd

This is a working drawing of internal details and section-throughs from the design development stage. It shows detailed information for the internal fit-out, including location, dimensions and types of cabinetry, appliances and fixtures.

### 1. Symbol (elevation)

This symbol shows that the view has been taken from the kitchen floor plan which is then cross-referenced to the appropriately detailed elevation.

### 2. Appliance information

Provides dimensions of the appliances to be used in that location.

### 3. Pantry information

Provides the internal details of the pantry.

### 4. Fixture information

Provides the relevant dimensions and fixtures (kitchen sink) to be used in that location.

### 5. Cabinet details

Provides the relevant dimensions to be used for the cabinet construction.

### 6. Cabinet information, view K1

Provides dimensions and detailing of the cabinets, tiling, wall and section through the window looking from view K1.

### 7. Cabinet information, view K2

Provides dimensions and detailing of the cabinets, tiling, wall and the window looking from view K2.

### 8. Cabinet information, view K3

Provides dimensions and detailing of the cabinets looking from view K3.

### 9. Kitchen information, view K4

Provides dimensions and detailing of the cabinets, appliances, wall and direction of the swing of the pantry door looking from view K4.

## 10. Appliance information

The schedule identifies the type of appliances, brands and relevant sizes to be referred to during cabinet construction.

## 11. Cabinet details

Provides relevant dimensions to be referred to for the construction of the cabinets.

## 12. Symbol depicting view taken

Symbol shows that the view has been taken from the bathroom floor plan which is then cross referenced to the appropriately detailed elevation.

## 13. Floor covering

Specifies tiles to be used as the floor covering.

## 14. Floor waste location

Shows the location of the floor waste, relevant to the bath, shower and vanity unit.

## 15. Vent location

Shows the location of the vent within the ceiling.

## 16. Door details

Shows the size of the door and its position in the wall.

## 17. Fixture information

Provides the relevant dimensions of the bath and vanity unit to be used in that location.

## 18. Fixture dimensions

Provides the relevant dimensions of the vanity unit to be used in that location.

## 19. Dimensions related to wall

Provides relevant dimensions in relation to the length of the wall that the door will open against and the shower to be used in that location.

## 20. Fixture dimensions

Provides relevant dimensions in relation to the bath and shower to be used in that location.

## 21. Fixture dimensions, view B1

Provides dimensions and detailing of the vanity unit, tiling, bath, mirror, wall and section through the window looking from view B1.

## 22. Fixture dimensions, view B2

Provides dimensions and detailing of the vanity unit, tiling, bath, shower, shower screen, wall and window looking from view B2.

## 23. Title block

A title block must be shown to record the details relevant to the owner/s, address of the lot, revisions or amendments, scale, sheet number, job number etc.